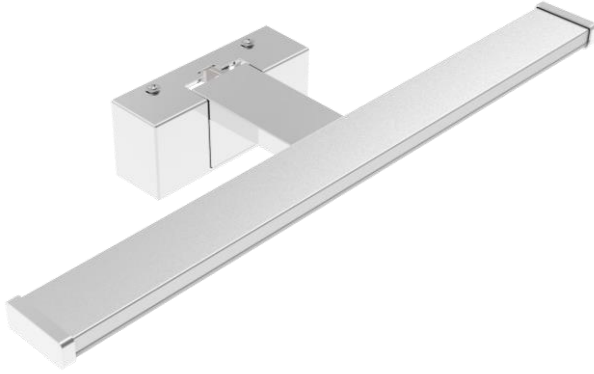


### Feature:



- No UV or IR light radiation.
- Provide 120 °beam angles.
- Easy Installation.
- Low Power Consumption: Less than 8 Watts.
- Long lifetime: 25000 hours (L<sub>70</sub>).
- Correlated Color Temperature: 2800-6500K.
- Operating temperature: -20°C~+50°C.
- LED Type:2835 LED.
- IP Class:IP44.

### Benefits:

- Energy Cost Savings:  
Over 60% Compared to Incandescent.
- Solid-State:  
High-Shock & High-Vibration Resistant,  
Both Electrical and Mechanical
- Eco-Friendly:  
No Mercury, No Lead Content
- No Hazardous Emissions:  
No UV or IR Radiation
- Constant Light Output:  
Even Lighting, Non-Halation

### Application:

- Mirror lighting
- Bathroom lighting
- Cabinet lighting
- Other Lighting

## Product Specifications:

Material	Aluminum + PC + ABS
Input Voltage	AC240V
Wattage	8W
Operating Frequency	47-63Hz
Operating Temperature	-20°C ∞ +50°C
Storage Temperature	-30°C ∞ +60°C
Net Weight per piece (g)	---
Certification	CE;ROHS Compliant
Installation Accessories	Expansion Pipes(2pcs)、Screws(4pcs)
Size(Each)	400x139x51mm
External Wire	H03VVH2-F、2x0.75mm <sup>2</sup> White Wire End With Copper Sleeves

## Product Selection Guide:

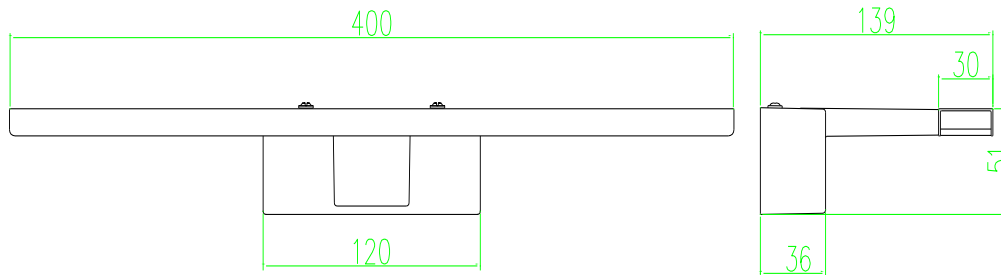
Product	Beam Angle	Luminous(lm)	Color Temp /Wavelength	Color	CRI
MF-W40A-400-3	120 °	640	5500-6500K	White	≥80
MF-WW40A-400-3	120 °	600	2800-3200K	Warm White	≥80

## MF - XX / 40 / A-400-3

①                      ②                      ③                      ④                      ⑤                      ⑥

- ① MF: Mirror Front Lamp Series
- ② XX: W(White);WW(Warm White)
- ③ 40: 40 pcs leds
- ④ A: AC 240 V input
- ⑤ 400: Dimensions (400mm in length)
- ⑥ 3: Style Number 3

### Product Dimensions:



### Notes:

1. All dimensions unit in mm
2. Tolerances are  $\pm 2$ mm unless otherwise noted.

### Installation Instructions and Warnings:

- Turn off power before inspection, installation, or removal.
- Not for use where exposed to the weather
- Do not use in totally enclosed fixtures.
- Suitable for touch dimmer.
- There is no power supply inside the product.

### Notes:

The part number, type, and specifications mentioned in this document are subject to future change and improvement without notice. Before production usage customer should refer to the latest datasheet for the updated specifications.